

ClusterSeven: Trust is Good, Transparency is Better

With ClusterSeven Model Risk Management (MRM), financial service institutions gain uniquely powerful capabilities for delivering comprehensive MRM initiatives quickly, efficiently and effectively.

Models are core to managing and developing your finserv business. But without effective controls in place, models can expose your firm to significant operational, commercial, reputational and regulatory risks. You need a flexible, dynamic and effective MRM solution that can evolve as your requirements and business evolve.

What makes ClusterSeven MRM exceptional?

It covers a range of model environments, as well as the tools and calculators that feed them. Providing a powerful, flexible, and cost-effective MRM solution to the urgent need for an easy-to-use yet more flexible, scalable, and agile MRM solution with quick ROI.



The challenge: Implementing MRM in a complex modeling environment

Model environments are typically varied, using a range of platforms – SAS, Python, R, even Excel spreadsheets – to provide an enterprise with a modeling platform. While this delivers value... the realities of sustaining multiple, often informal modeling environments can be huge hurdles.

Model applications in this environment are usually managed manually, pressuring staff to verify accuracy and manage change documentation, generate reports, and provide the transparency that management and regulators increasingly demand.

With limited resources, time, and budget, modeling teams are hard-pressed to deliver, maintain, and enhance service, reduce model

risk, and comply with enhanced regulatory scrutiny, including SS3/18, SR 11 7, SMCR, and others. As the regulatory and business landscapes evolve, there's a premium on **MRM flexibility so businesses can keep pace.**

The solution: A flexible, dynamic MRM solution to meet evolving requirements

ClusterSeven MRM is a scalable platform allowing you to implement a solution that quickly and easily meets present-day demands and future needs:

- **Implement a solution quickly for your here-and-now modeling challenges.**
- **Develop an MRM framework for meeting present and ongoing demands, covering all your models as well as all tools and calculators.**

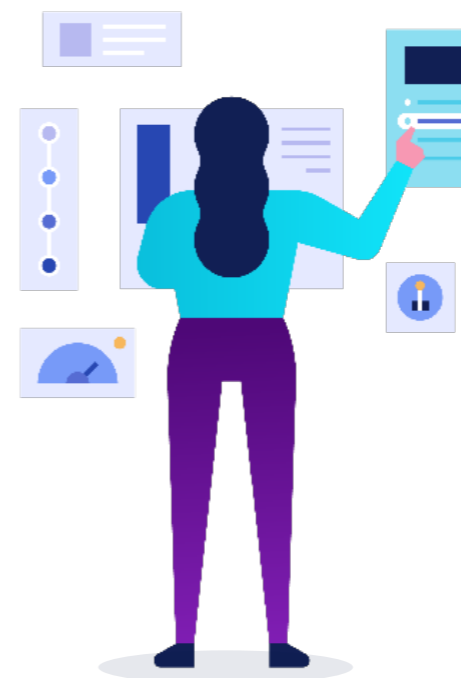
MRM Express

Template-based MRM for model applications easy-to-use, easy-to-implement, easy-to-upgrade MRM providing:

- **Model Inventory Management**
- **MRM Workflow Management**
- **MRM Reporting**

Benefits:

- **A turnkey solution that delivers “out-of-the-box” template-based automated MRM.**
- **Quick time-to-value, with ROI in less than 12 months.**



MRM Enterprise

Enterprise-strength MRM for models and Excel & Access-based tools and calculators. A low-overhead, high-impact MRM environment, with full development capabilities that align fully with your business, delivering:

- **Model Inventory Management**
- **MRM Workflow Management**
- **MRM Reporting**

Unique Enterprise MRM capabilities for Excel and Access-based models, tools, and calculators including:

- **Full data mapping**
- **Risk assessment**
- **Scanning & discovery**
- **Proactive monitoring & alerting**

Benefits:

- **A dynamic enterprise MRM environment, utilizing enhanced template capabilities, that fully aligns your MRM to the unique demands of your business.**
- **Quick time-to-value, with ROI in less than 12 months.**
- **Unique, powerful, and seamless integration of your Excel and Access-based tools & calculators into your environment.**

WHY CLUSTERSEVEN

Fast Implementation - Leverage ready to deploy templates to implement MRM quickly. Be ready in weeks, not months.

Cost-effective - Utilise our templates and easy-to-use configuration tools to make implementing your MRM cost-effective, with minimal use of external consultants.

Unique - Our MRM solution encompasses all modeling environments at financial institutions, as well as offering seamless integration into Excel and Access-based models, tools & calculators.

Proven - ClusterSeven's solutions are used by financial institutions across the world to enhance their risk management, compliance, and business performance.

Customizable - With elegant, configurable dashboards, dynamic workflows, and integrations to third-party BI tools, ClusterSeven can meet all of your reporting, audit, and analysis needs.

PART OF THE MITRATECH COMPLIANCE SUITE

ClusterSeven is part of the only end-to-end suite of solutions for ensuring comprehensive data privacy and information governance that can operate across your entire enterprise.

With Mitrtech Enterprise Compliance Suite (ECS), you can not only enjoy top-down visibility and oversight but also embed data privacy and information governance enforcement at the operational level throughout your business.

MITRATECH

info@mitratech.com

For more information about ClusterSeven visit [Mitrtech.com](https://www.mitratech.com)