

# Mitratech ClusterSeven Discovery

*Trust* is good. *Transparency* is better.

## Discovery

### The Fastest EUDA Inventory Risk Analysis on the Market

#### What is Discovery?

The Mitratech ClusterSeven Shadow IT Manager Discovery tool provides organizations with the ability to allow them to find their EUDAs (end user developed applications) typically spreadsheets, python and other text based files scattered across their enterprise, assess their risk, and understand how they are connected together.

There are three key steps in the process: **Light Scan** detects high-level file properties such as created, modified date and document properties. **Consolidation** organizes and removes duplicate files by analyzing each file path and file name to determine if multiple versions are present. **Deep Scan** analyzes the content of Excel spreadsheets, python and other text based files, using risk rules to determine each file's complexity.

Beyond understanding the complexity of each individual file, you'll also be able to expose the data lineage of the connected spreadsheets.

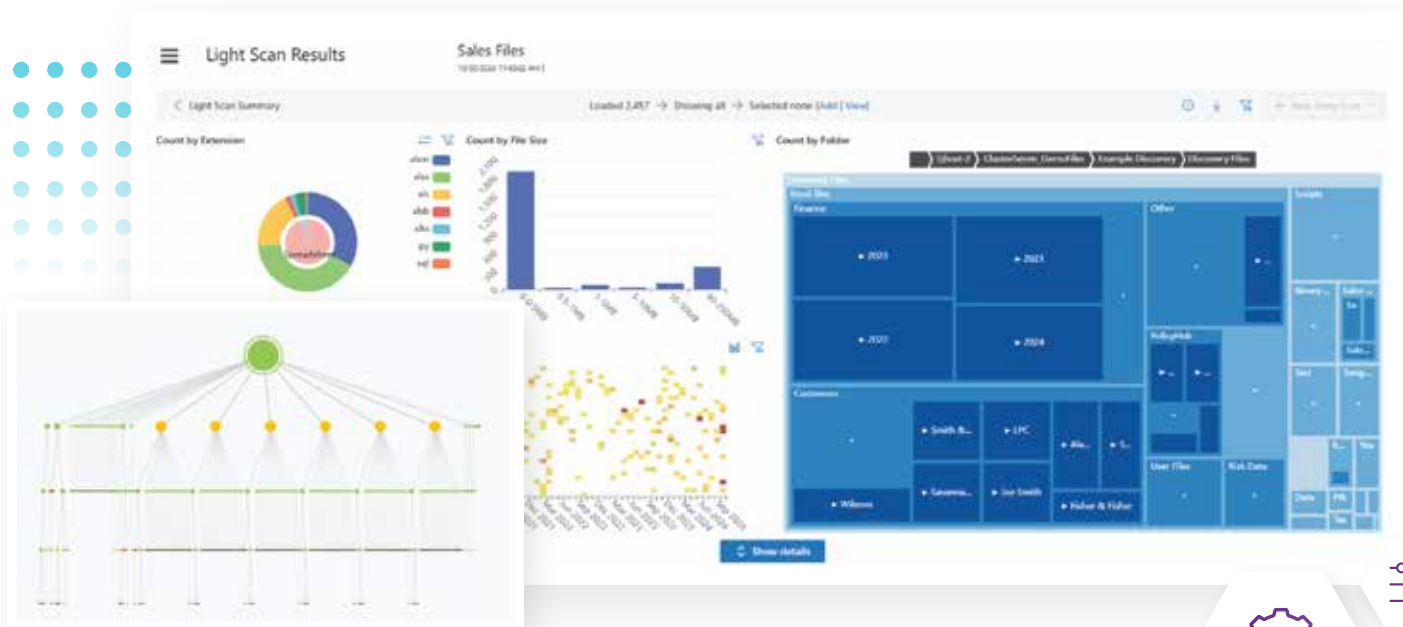


#### How Discovery Can Uncover Hidden Risk in Your Spreadsheets, Python and Other Text Based Files

Gaining insight into the scale and scope of their EUDA inventory is helping organizations finally understand their hidden risks. Discovery enables an EUDA inventory to be completed both with or without the participation of business users. All analysis is conducted centrally, ensuring the fastest EUDA inventory risk analysis on the market, with a configurable risk scoring system.

#### Key Features Include:

- The ability for risk rules to be defined and amended centrally and immediately cascaded to the business
- Create your own risk rules
- Create risk 'profiles' using groups of rules to risk assess specific processes or department requirements
- Complete consistency and auditability of analysis and reporting (i.e. no dependency on desktop components)
- Zero impact on the end user, i.e. no dependence on desktop/ add-ins that may compromise desktop performance
- No need for users to analyze one file at a time
- High scalability for large files and large volumes of files



### ClusterSeven Shadow IT Manager Health Check

Conducting a thorough risk assessment of an organization's entire EUDA estate is part of our ClusterSeven Shadow IT Manager Health Check offering. Contact us to learn more about Discovery or get a Health Check for your organization.

### About ClusterSeven Shadow IT Manager

ClusterSeven Shadow IT Manager helps you discover and manage the EUDAs spread across your organization that are outside of IT's control. These are the spreadsheets, python and other text based models, and other End User Computing (EUCs) files and applications that can be critical to your company's operations and regulatory compliance. We help you monitor these files across your entire business, while allowing your teams to take advantage of the efficiency EUDAs bring.



## ClusterSeven

### Learn More

Set up a consultation with a Mitratech expert to see how you can gain insight and control over the EUDA assets within your own enterprise.